

# MultiRoute EDR51

The latest generation of high-performance drive tyre for national and regional operations.



#### LONGEVITY

Long life span and low rolling resistance to lower tyre and fuel expenses.



#### SAFETY

Excellent stability and durability, even in challenging weather conditions.



#### CONTROL

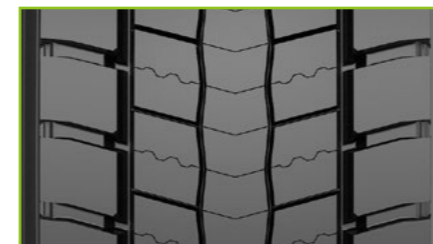
Excellent wet and dry grip even in low temperatures.

## MultiRoute EDR51

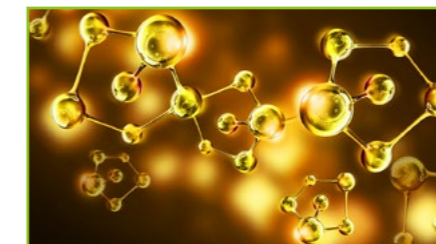


### TECHNICAL FEATURES

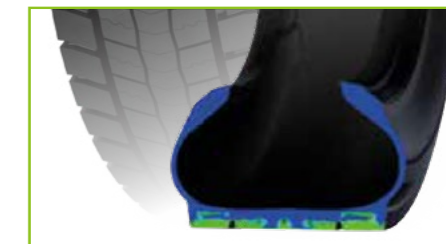
The unique pattern ensures the fuel efficiency and even wear for lower operation costs.



The tread formula ensures grip and traction in low temperature environments.







The low deformation frame structure ensures long-term stability and durability for increased safety.



### SIZE RANGE

▲ Recommend 

Size	PR	LI/SS	Tread Depth (mm)	M+S				
275/80R22.5	18PR	149/146L	22	√	√			
295/60R22.5	18PR	150/147L	19	√	√	D	C	74dB B
295/80R22.5	18PR	154/149L	22	√	√	D	C	74dB B
315/70R22.5	18PR	156/150L	20	√	√	D	C	74dB B
315/80R22.5	20PR	156/153L	22.5	√	√	D	C	74dB B