

MultiRoute ETR31

ETR31 is the ideal single fitment choice for paved road service applications thanks to its advanced construction and wide base sizes.



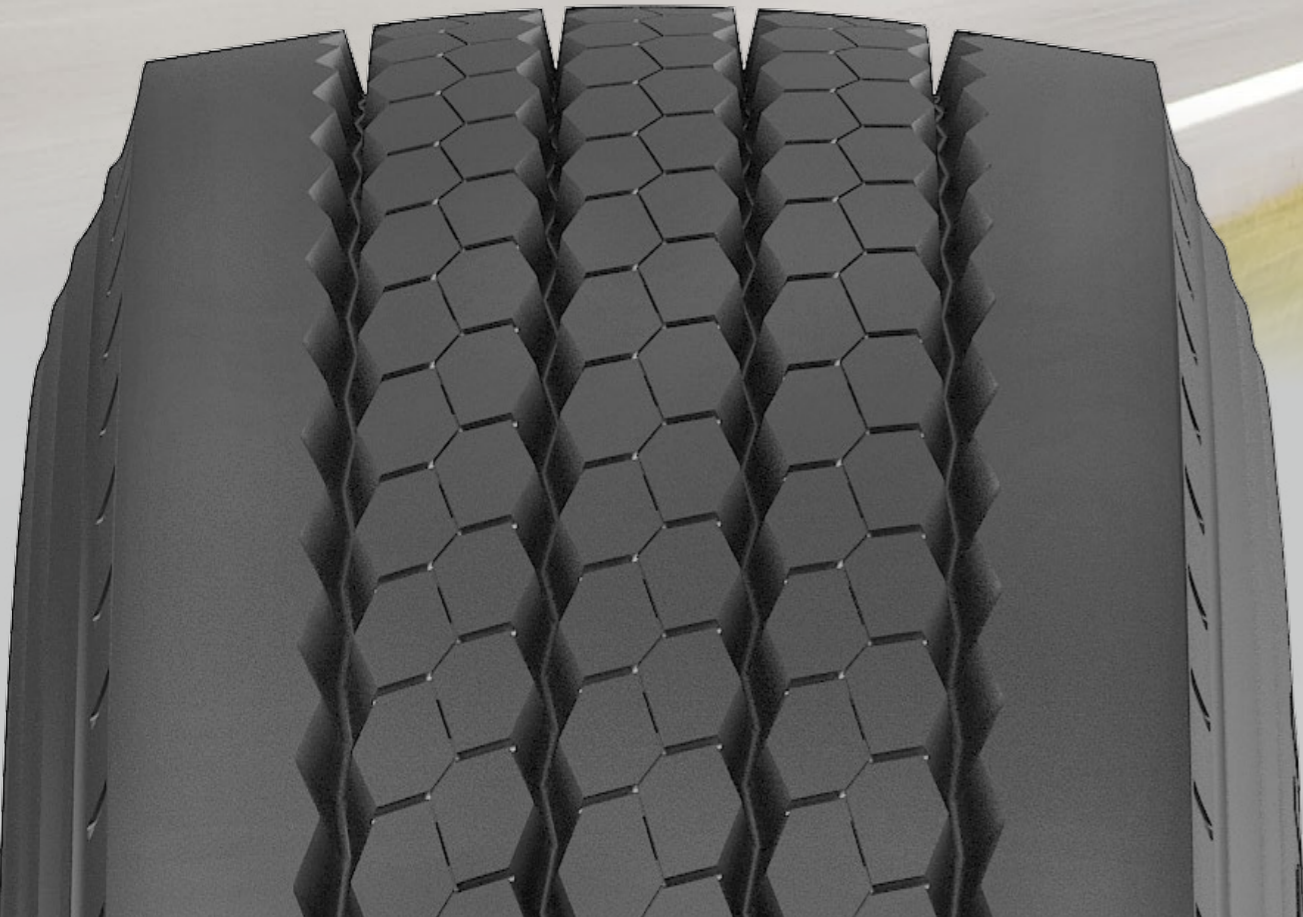
LONGEVITY



SAFETY



GREEN



MultiRoute ETR31



Features

- ▶ Optimized wide tread and four-belt design
- ▶ Increased tread depth and retengleal footprint
- ▶ Enhanced carcass structure
- ▶ High conductive cord
- ▶ Optimized tread pattern design

Benefits

- ▶ Improves longevity and enhances retreadability
- ▶ Promote even wear and mileage potential
- ▶ Improves irregular wear resistance and retreadability
- ▶ Helps lower rolling resistance and increases fuel efficiency
- ▶ Provides exceptional grip with excellent self-cleaning properties

Size

Size	PR	LI/SS	Type	Standard Rim	Overall Diameter (mm)	Section Width (mm)	Tread Depth (mm)	Load		Pressure	
								S(kg)	D(kg)	S(kPa)	D(kPa)
385/65R22.5	20	160K	T/L	11.75	1072	385	17.5	4500	/	900	/
385/65R22.5	24	164K	T/L	11.75	1072	385	17.5	5000	/	930	/